



PRAIRIE CONSERVATION FORUM



Alberta Prairie Conservation Forum

April 1, 2018 - March 31, 2019
Annual Report

ISBN No.: 978-0-9920848-8-2

(On-line)

December 2019

For more information about the Prairie Conservation Forum, contact:

**Prairie Conservation Forum Coordinator
c/o Alberta Environment
Southern Region
2nd Floor, Provincial Building
200 – 5th Avenue South
LETHBRIDGE, Alberta T1J 4L1
E-mail: info@albertapcf.org**

Photography credits:

Front Cover — Horned lark, Katheryn Taylor
This Page — Rangeland, Katheryn Taylor
Table of Contents — Prairie sunrise, Katheryn Taylor
Page 2 — AGM and tour, Ian Dyson
Page 2 — Transboundary workshop, Sasha Harriott
Page 3 — Pronghorn and golden eagle, Katheryn Taylor
Page 4 — Range stewardship course, Sasha Harriott
Page 7 — Common yellowthroat, Katheryn Taylor
Page 8 — Columbian ground squirrels, Katheryn Taylor
Page 9 — American avocet, Katheryn Taylor
Back Cover — Grasslands, Katheryn Taylor

<http://www.albertapcf.org>



Prairie Conservation Forum Vision

The biological diversity of native prairie and parkland ecosystems is secure under thoughtful and committed stewardship of all Albertans.

Guiding Principles

1. Management responsibilities for native prairie and parkland fall primarily on public agencies (i.e., Federal, Provincial and Local Governments), First Nations and private landowners. The PCF will only support and facilitate discussions concerning actions that contribute positively to the Vision and Mission of the PCF.
2. The PCF will facilitate networking, information exchange and discussion amongst member organizations and with other jurisdictions outside of Alberta.
3. Partnership activities are based on the belief that the social and economic benefits which are derived from prairie and parkland ecosystems are dependent on the ecological health of these systems. Therefore, management strategies will be promoted that ensure the ongoing health of these ecosystems.
4. The PCF Partnership draws together diverse opinions and approaches to ecosystem management. To best ensure the development of collaborative and effective solutions, the Partnership will interact in a manner that is respectful of that diversity.
5. PCF members will strive to implement PCF programs and activities in their respective organizations in support of the PCF Vision.
6. The Vision can only be achieved by the efforts of many, including the PCF itself and its member organizations, accompanied by effective working relationships with others who share the Vision.
7. The PCF supports the equitable sharing of social and economic costs and the benefits of maintaining native biodiversity and ecological services among all segments of society.

Outcomes

Maintain Large Native Prairie and Parkland Landscapes. The existence of intact and fully functioning native prairie and parkland landscapes in Alberta are the best guarantor of future regional biodiversity and environmental quality.

Conserve Connecting Corridors for Biodiversity. Habitat connectivity is essential to maintain native biodiversity and ecosystem function. The conservation and restoration of important corridors will help to maintain functional native prairie and parkland landscapes.

Protect Isolated Native Habitats. Within fragmented landscapes there exist small, isolated pockets of ecological refugia that may be as important for native biodiversity conservation as larger prairie and parkland landscapes. These need to be identified, studied, and possibly protected.



Table of Contents

	Page
Message from the Chair	1
Highlights	
Overview of PCF Meetings and Tours	2
Transboundary Working Group	2
Education Committee	3
MULTISAR	3
Alberta Range Stewardship Course	4
State of the Prairie Committee	5
Renewable Energy Committee	5
Connecting Corridors Committee	5
Financial Report	6
PCF Board of Directors	7
Recognition of PCF Supporters, Coordinators	8
PCF Member Organizations	9

~~~~~

*“All around them there was nothing but grassy prairie  
spreading to the edge of the sky”*

*~Laura Ingalls Wilder~*

~~~~~

Message from the Chair

2018 was a busy year for PCF and our partners as several key initiatives were undertaken to meet our PCAP objectives with tremendous collaboration and in-kind support; a hallmark of PCF members and our collective approach. Through this we were able to provide key information to help support partners and stakeholders decision making and leverage expertise across the membership to help deliver on PCAP outcomes. A terrific effort by everyone. PCF members and partners have been a great catalyst to bring people and dollars together to effectively deliver a variety of initiatives. PCF Board and committee members attended and presented at many events and conferences throughout the year to share our work and receive feedback on those efforts. I will highlight some of those initiatives and they will be further expanded on in the individual committee reports.

AIA professional development session in Banff. The PCF was invited to present a professional development session at the Alberta Institute of Agrologists annual provincial conference. 140 people attended the capacity session to learn about conservation of native prairie through the lens of the Prairie Conservation Forum initiatives, PCF board members delivered the workshop and we received very positive feedback.

Renewable Energy- Following up on the workshop and report by Marian Neville on Beneficial Management Practices for Renewable Energy Projects commissioned by the Board, the committee put out an RFP to develop fact sheets for landowners and for industry on best management practices for renewable energy which were subsequently distributed directly to municipalities and through various extension activities by PCF and partner members.

Connecting Corridors- The Board sent out an RFP for a report on key principles of Connecting Corridors in Alberta across species and guilds to provide a foundational document to build future work from. O2 consulting successfully submitted “Connecting Habitats in the Prairies of Alberta” Which is located on our website. Further work on this will continue to support PCAP objectives of the same name. Corridors are critical links to retain biodiversity.

AB Range Stewardship Course - In order to support private land stewardship efforts and address the gap left when the Alberta Stockmen’s course ended, we brought together the initial steering committee to build on previous work of parties who have been involved with previous range management courses and can provide expertise to ensure the course is relevant to ranchers. Steering committee members are from the PCF Board, AB Agriculture and Forestry, Alberta Beef Producers, Alberta Environment and Parks, Nature Conservancy Canada, Cows and Fish and Agriculture and Agri-food Canada. The course format is intended to have a balanced triple bottom line approach, with ecological, economic and social components. Consensus of the Steering committee and board was to rename the course to reflect the stewardship basis of the course. PCF and the steering committee members worked together to deliver the successful inaugural AB Range Stewardship Course which was held in Stavely this September 19th. A large thank you to Alberta Environment and Parks Range Specialists for their extensive efforts on the course delivery. Planning is already underway for the 2019 course based on the feedback we received from this year’s participants.

State of the Prairie- Full steam ahead on the State of the Prairie Project with considerable efforts from all members of the steering and technical committees to thoroughly investigate all data sources and appropriate methodologies to determine the current extent and change over time of native grasslands in the Grassland and Parkland Natural Regions. This project is critical to determine as accurately as possible the extent of native prairie and areas where we are seeing changes to help support conservation and management amongst all the PCF stakeholders and to most accurately support decision making. This project involves PCF Board members, GIS teams from AF and AEP as well as several retired specialist lending their considerable expertise to evaluate and analyze a variety of datasets. This project also includes the investigation of new remotely sensed, statistical data from the German Aerospace Centre as a potential means to ensure comparisons over time should current datasets be unavailable in the future.

4th Annual Transboundary Grassland Workshop- A very successful workshop held in Lethbridge this December with close to 80 people from Alberta, Saskatchewan and Montana attending and 50 people attending the tour at Writing on Stone Provincial Park. This workshop brought a variety of stakeholders, land managers and agencies together to look for opportunities to sustain trans-boundary cooperation and share approaches for grassland conservation. PCF has been integral in maintaining support for this Trans-boundary Grassland initiative.

Meetings with members:

Our **AGM** was held January 17 at the Coutts Center near Nanton. A big thank you to the following members whose terms ended, for their service to the board : Ron McNeil, Marie Tremblay, Bob Gainer, Brad Downey, Graham Caskey. A warm welcome to our new board members for 2018.: Brandy Downey, Neal Wilson, Tracy Kupchenko, Chelsea Tomcala, Christyann Olson, Terra Simieritsch. We held our **June Meeting and tour** in the Pine Lake Area near Red Deer. Tour and presentations were given by Ken Lewis, ALUS Coordinator for Red Deer County, Darwin Chambers of Ducks Unlimited Canada and Alia Snively of Nature Conservancy Canada. The **fall meeting and tour in September** brought members together at the Coutts Centre near Nanton where we had presentations from Jennell Rempel of AB environment and Parks on the status and process for the proposed Twin Rivers Heritage Rangeland and from Livio Fent and David Spiess from AB Agriculture and Forestry on the current results from the State of the Prairie Project. Member updates were very informative and showcased the extensive work undertaken by all member organizations through a variety of approaches to support prairie conservation.

The PCF Board are looking forward to collaborating with all members on grassland conservation initiatives. Please come join us at our next meeting or feel free to contact any member of the board or our coordinators for information or to share your ideas and approaches. We welcome your feedback especially as we will be beginning our planning for the next 5 year Prairie Conservation Action Plan (PCAP) next year. Collaboration is essential to reflect the variety of viewpoints and on the ground experience of our members and to build a consensus based plan that supports an integrated approach to prairie conservation.

Karen Raven
PCF Chair, 2018-2019

PCF Meetings and Tours

The PCF spring meeting took place at the Crossroads Church in Red Deer, AB, on June 12, 2018. This was a short, half day meeting where we focussed on committee and member updates, and featured a presentation by Terra Simieritsch on the North American Waterfowl Management Plan (NAWMP). The remainder of the afternoon was spent on a tour featuring conservation projects around Pine Lake. Tours and presentations were given by Ken Lewis (ALUS), Darwin Chambers (Ducks Unlimited Canada) and Alia Snively (Nature Conservancy Canada).



The PCF fall meeting and tour took place at the Coutts Centre in Nanton, AB, on September 20, 2018. The meeting focussed on an update by the State of the Prairie Committee and a presentation on the Twin River Heritage Rangeland Natural Area Proposal by Linda Cerney and Jennell Rempel. Following the meeting, there was a tour of the Coutts Centre, led by Kara Matthews and John Stoll.

The PCF Annual General Meeting took place at the Crescent Point Regional Field House in Aldersyde, AB, on January 17, 2019. At this meeting, all of the PCF working committees provided updates, we held elections to the PCF Board of Directors, and did a financial review for members. There was also a workshop for the State of the Prairie Committee to get feedback from the membership on next steps, and a presentation was given by Norine Ambrose, with Cows and Fish, on the program's evaluation results and how these results can help other organizations in program design and delivery.



For PCF members, PCF meeting notes and presentations can be found on the members only page of the PCF website: www.albertapcf.org.

Transboundary Working Group

The fourth Transboundary Grasslands Partnership Workshop was held in Alberta on December 3-5, 2018 in Lethbridge. The workshop was titled "Connecting the Dots" and kicked off with a fantastic tour of Writing on Stone Provincial Park/ Áísínai'pi Park on December 3rd.

An optional tour was a new addition to the workshop and provided an opportunity to showcase the hosting jurisdiction and gave participants a chance to connect to the landscape and with each other in the natural environment.

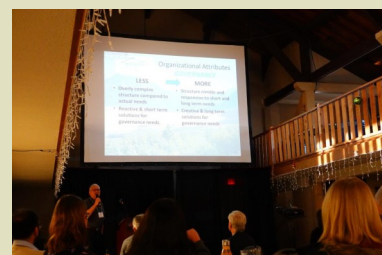
Seventy-three participants attended the workshop and enjoyed grassland conservation and program updates from each of the three jurisdictions (Alberta, Montana and Saskatchewan) in addition to presentations on:

- Sustaining a Transboundary Partnership – Bill Dolan
- Alberta State of the Prairie Outcomes- Livio Fent
- Remote Sensing Tools in Grasslands – Anne Smith
- MultiSAR- multi-species conservation in Alberta – Kristen Rumbolt-Miller and Katheryn Taylor
- Rangeland Drought Resilience – Megan Van Emon.



An enthusiastic photographic tour of tiny critters and insects living in the grassland ecosystem was led by Dan Johnson from the University of Lethbridge and kept participants entertained through dinner and provided a well needed break before day three's workshop activities.

On the final day of the workshop participants were led through a grassland project mapping session; a session on social media tools, education and story-telling and lastly a session on stewardship tools and voluntary project incentives.



Overall the workshop was determined a great success and continues to meet the goal of the workshop by providing a forum where transboundary jurisdictions and sectors can communicate and work collaboratively to conserve and enhance native grassland landscapes.

The Transboundary Grasslands Partnership Core Team continues to hold monthly conference calls with the main focus of maintaining communication between jurisdictions and supporting the development of the annual workshop.

The 5th workshop will be hosted and held in Saskatchewan on February 25-27, 2020 in Regina.



Education & Communication Committee

The Deep Roots Videoconference continued to be delivered by Alberta Parks to students across Alberta in 2018-2019. The PCF sponsored 37 classes to receive the presentation (i.e. pay the teacher's fee of \$100 for the presentation). The total number of students within these classes was 735, with the majority of these students being in grade 4. Two field trip bursaries totaling \$1,300 were awarded to Alberta schools, one in Calgary and one in rural Alberta.

Two bursaries were awarded to students attending the Society of Range Management Conference. \$1,000 was awarded to Courtney Taylor, the winning presentation from the 2017 SRM competition, as she was invited back to the conference. \$500 was awarded to the University of Alberta Range Team.

A Facebook page for the PCF was launched in 2018, with the first post published in November 2018. The goal of the Facebook page is to reach more people, and a different audience, than would be possible through email alone. PCF news, events, and projects will be posted to the page, as will other grassland related news, events, and informational tidbits. There are currently 43 people following the page. The post that was shared the most, with 956 people reached, was the Alberta Range Stewardship Course poster and registration information.

PCF brochures and PCAPs were taken to events such as the transboundary workshop in Lethbridge, Aggie Days in Lethbridge, and the Calgary Stampede.

MULTISAR

MULTISAR is a program focused on multi-species conservation at the landscape level that promotes stewardship through voluntary participation of landholders on both Crown and private lands. The program is a collaborative effort among landholders, the Alberta Conservation Association, Alberta Environment and Parks, the Prairie Conservation Forum, Cows and Fish, Canadian Cattlemen's Association, Alberta Beef Producers, the Canadian Round Table for Sustainable Beef, and Environment and Climate Change Canada.

The Habitat Conservation Program includes the development of detailed Habitat Conservation Strategies (HCS) in the Milk River and South Saskatchewan watersheds of southern Alberta, as well as the more compact Species at Risk Conservation Plans (SARC Plans) delivered throughout the Grassland Natural Region. In 2018-2019, MULTISAR created another extension program, termed Habitat Management Plans (HMP). Like SARC plans, HMPs are a more condensed version of the HCS applied at the ranch level, but involve detailed wildlife surveys and simplified wildlife habitat assessments to document species at risk and habitat indicators.

In 2018-2019, a new HCS was developed on five ranches totalling approximately 56,184 acres. MULTISAR also completed two HMPs on 4,649 acres of land within our priority areas. Several habitat enhancement projects were developed to improve the habitat of key wildlife species on HCS and HMP properties. These varied from planting of native grass plugs, wildlife-friendly fencing, installation of ferruginous hawk poles, tree protection, fencing off wetlands and dugouts and providing alternate water.

Despite interest from land managers, no SARC Plans or Beneficial Management Plans were delivered this year due to several circumstances, such as the land being outside of targeted species at risk range.

The Education, Outreach, and Awareness program was achieved primarily by MULTISAR staff giving presentations and demonstration tours to landholders, wildlife and conservation groups, college students, and the general public. MULTISAR partnered with the Canadian Cattlemen's Association to man a booth during the Calgary Stampede that was viewed by over 100,000 people. Communication material produced included one issue of MULTISAR's Grassland Gazette newsletter. In total, MULTISAR made over 225 different types of contacts with more than 7,000 people (and an additional 100,000 people at the Calgary Stampede) including landholders, the general public, academia, industry, media, government and non-government organizations and other sectors.

Under the Research and Monitoring Program, MULTISAR continued implementing its monitoring and evaluation protocol to assess the directionality of habitat improvements and management changes and the effectiveness of its Habitat Conservation Strategies. A subsample of range and riparian sites and wildlife points were revisited on five MULTISAR HCS ranches (58,672 acres), five years after their initial assessment, to determine if management recommendations had been implemented and to monitor their impact on species at risk habitat. Roughly 50 habitat enhancement projects, on participating HCS ranches, were monitored in 2018 to determine if enhancements are achieving their objectives.

MULTISAR continues to compile wildlife observation and vegetation assessment data it has been accumulating since its first Habitat Conservation Strategy. In 2019, MULTISAR will also continue to focus on determining inferences between species at risk occurrences and habitat metrics. MULTISAR will strive to promote Beneficial Management Practices recommendations to improve and maximize habitat quality for species at risk.



Alberta Range Stewardship Course

The Alberta Prairie Conservation Forum brought together members of the committee to build on previous work of parties who have been involved with previous range management courses and provide expertise to ensure the course is relevant to ranchers. No annual course currently exists and members felt it was important to build on the previous course feedback and to leverage funds and expertise. The intent is to develop an overarching vision and outcome along with overall provincial course components to sustainably deliver on an annual basis. A separate planning committee with steering committee membership will be engaged to deliver the first course slated for this fall.

Vision

A collaboratively delivered, annual range management course that is provincial in scope and regional and local in delivery. A course that provides field training in core range management principles, plant identification and lessons learned from ranchers and agency staff to support continued stewardship of rangelands. To build a community of practice with an emphasis of sharing skills and enhanced working relationships both within and outside the ranching community to support long term sustainable management of rangelands.

Outcomes

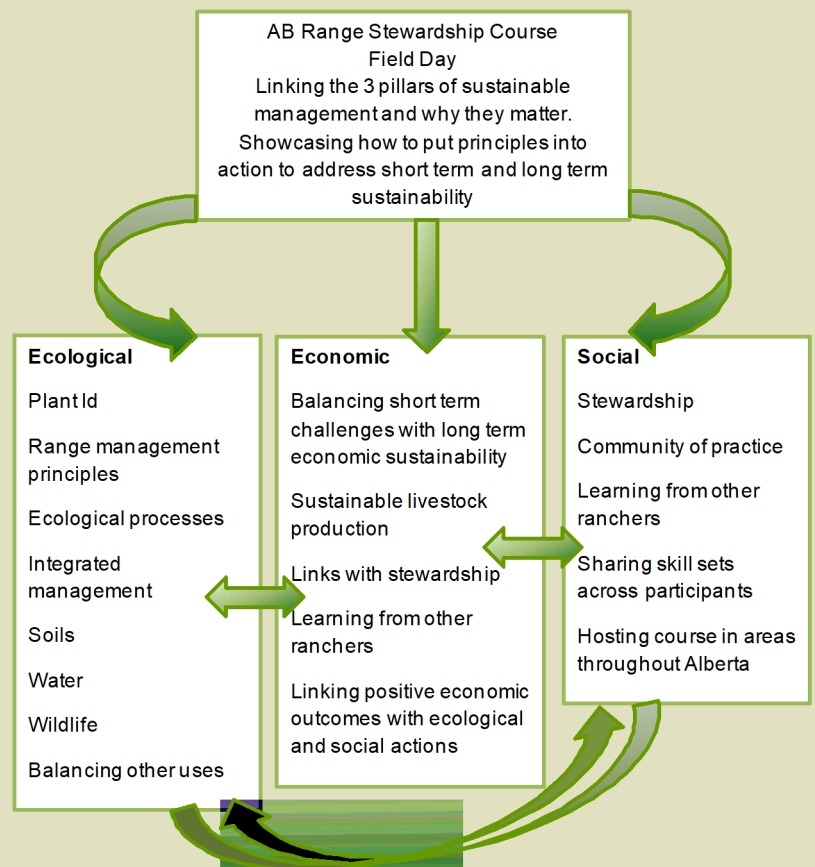
The course format is intended to have a balanced triple bottom line approach, with ecological, economic and social components. The course contains key range management principles and information that includes other components or modules reflecting regional and local issues to ensure an audience of new and experienced rancher's will each get information out of the course. The intent is to support continuous improvement throughout the years and continue to attract new participants. The course is intended to complement and support related beef industry initiatives such as those related to the Canadian Round Table for Sustainable Beef.

Course Delivery Mechanisms and Approach:

Based on Rancher feedback, the course delivery would be ideal held as one day field sessions once or twice a year to support rancher attendance. Field days are intended to vary in location throughout the province to attract and reach a broad group of rancher's and reflect local conditions. The experience of Ranchers will be incorporated as part of the field day.

The steering committee will collaboratively develop the overall course framework and coordinate funding support and work with the Regional/local planning committee to support delivery of the course that reflects regional and local conditions and issues.

Each year feedback from participants will be incorporated by the steering and regional committee into the following year's course to reflect continuing improvement to ensure course relevance.



Change Analysis: State of the Prairie

Native Prairie is an area of unbroken grassland or parkland dominated by non-introduced species. The intent of this collaborative study was to report on the current extent and change in Native Prairie cover in the Grassland and Parkland Natural Region over various scales to determine any changes or losses of native prairie and where they occur. By undertaking this in a collaborative way, the intent is decision makers throughout our PCF membership will have a consistent set of information on which to base their decision making.

The project area was summarized and evaluated by Grassland and Parkland Natural Regions, Public/Private lands, Natural Sub region, Eco-districts as well as Counties and other administrative areas such as military bases and First Nations. Given the available data sets, the technical team are able to report on the change over time from a baseline of 1990 to what was current in 2010. Our intent is to revisit the study when AAFC Land Cover data for 2020 becomes available, to follow up from 1990 to the present.

Another objective of the study was to suggest ways of cost effectively continuing this change analysis going into the future (hence evaluation of TimeScan data from the German Aerospace Center) if other data sets do not continue to be available. AB Agriculture and Forestry and PCF paid for this component of the study.

Some highlights from the work undertaken so far:

- The strength and weaknesses of 12 inventory data sources were evaluated to determine how they could best be integrated into the analyses.
- Ecodistrict alignment/GVI (Grassland Vegetation Inventory) - The Ecological framework polygons were reconciled and enhanced to the Natural Region provincial classification system hierarchy to be more reflective of GVI and Natural Sub-Region classifications. Subject matter experts on the PCF steering committee supported and carried out this reconciliation and enhancement on behalf of the technical team.
- TimeScan testing by Maapera Analytics using satellite imagery and checked against GVI was undertaken to test the viability of this methodology for potential use in the future in the event other inventories are discontinued.
- Preliminary results have been shared at various meetings by steering and technical team members. Such events have included the PCF fall meeting, Transboundary Grassland Partnership annual workshop, the provincial Endangered Species Coordinating Committee and Grassland Restoration Network Workshop. Steering committee members also put on a workshop at the PCF January AGM to get member feedback on engagement strategies to share the work with our member organizations and further work that could arise out of the results of the analyses. Several extension approaches and follow up initiatives were identified and will go into the next years' work plan and the upcoming 2021-2025 PCAP.

The technical report outlining the process, assumptions, GIS analyses and results is underway and being led by Livio Fent. The final report is expected to be complete and posted to the PCF website later in 2019.

Renewable Energy BMPs

RFPs for two communication pieces were put out in March 2018. The first was geared towards landowners and highlights the benefits of native prairie and provides information about the renewable energy industry (eg. what landowners need to know, what the risks of having this industry on their land are, how to handle contracts with the industry, and what the beneficial management practises are if they do allow the industry on their land). The second was geared towards the solar and wind energy industry and highlights best management practises for these industries, with emphasis on avoiding native prairie habitats. These two communications pieces were completed by the end of August, 2018. The landowner communication piece was printed and copies were sent to all MD's and counties within the grassland/parkland of Alberta, and the industry communication piece was emailed as an electronic copy to industry and government representatives, as well as attendees of the renewable energy workshop that was held by PCF in 2017. Both documents can be found on the PCF website.

Connecting Corridors

In 2016, PCF had a paper written on 'Connecting Habitats in the Prairies of Alberta: What does this mean and how do we manage for it?' This contract was awarded to O2 Planning and Design and addresses Outcomes 2 and 3: Conserve Connecting Corridors for Biodiversity and Protect Isolated Native Habitats; Approach 1: Collaborate with research and practitioner parties to better understand structural and functional connectivity on regional and local landscapes and define 'isolated' habitats/fragments. The paper was completed in the spring of 2017 and can be found on the PCF website: <http://www.albertapcf.org/resources-literature/pcf-resources>.

The committee geared up again in March 2019 with plans of hosting a workshop with invited experts in the field of connectivity on the landscape. The purpose of the workshop will be to identify potential corridors in Alberta and gather information on strategies to move forward.

Financial Report

Statement of Operations and Net Assets (Deficiency)

March 31, 2019

Revenue	2019	2018
Casino	\$ 26,382	\$ 51,013
Workshop income	11,529	7,185
Alberta Environment and Parks Grant	10,000	20,000
Administration—Multisar	7,692	7,692
Parks Canada Grant	5,000	5,000
Donations	171	172
Interest Income	122	129
Ducks Unlimited Grant	—	6,000
Total	\$ 60,896	\$ 97,191
Expenses		
Coordinator contract and expenses	\$ 50,417	\$ 35,384
Special Projects	37,123	42,724
Meeting expenses	12,311	4,512
Professional Fees	2,993	2,768
Insurance	1,880	1,842
Office	744	381
Donations	—	1,000
Total	105,468	88,611
Excess (deficiency) of Revenue over Expenses	\$(44,572)	\$ 8,580

Statement of Financial Position

March 31, 2019

Assets	2019	2018
Cash	\$ 289,054	\$ 256,210
Accounts Receivable	—	7,600
GST receivable	10,680	22,865
Liabilities and Net Assets		
Due to Multisar	\$ 20,805	\$ 10,785
Deferred Revenue	82,024	34,413
Net Assets		
Unrestricted Net Assets	\$ 36,905	\$ 81,477
Contingency Reserve	160,000	160,000
Total	\$ 299,734	\$ 286,675

Statement of Changes in Net Assets

March 31, 2019

	Unrestricted	Internally Restricted	Total 2019	Total 2018
Balance, beginning of year	\$ 81,477	\$ 160,000	\$ 241,477	\$232,897
Excess of Revenue Over Expenditures	\$ (44,572)	—	\$(44,572)	\$ 8,580
Balance, end of year	\$ 36,905	\$ 160,000	\$ 196,905	\$241,477

PCF Board of Directors

Karen Raven — Chair. Karen was raised on a ranch in the Southern Interior of BC where she gained her love of the land. Karen is the Manager of the Land Use Unit in the Environmental Stewardship Branch of Alberta Agriculture and Forestry. Her work focuses on support to Land Use Framework regional planning initiatives, ecosystem services, agricultural sustainability initiatives, conservation offsets, and biodiversity. Grassland conservation and stewardship on working landscapes are close to her heart and drive her involvement in the Prairie Conservation Forum.

Nolan Ball — Vice-Chair. Nolan is currently working as a Rangeland Agrologist in Public Land Management for the Special Areas and has been in this position for the past 3 years. Daily work focuses on helping manage 2.5 million acres of Public land that remains in native grassland and abandoned farmland that has reverted back to a native or modified condition. Prior to this position with the Special Areas, Nolan worked in oil & gas wellsite reclamation for 7 years as a consultant. Most of the work consisted of restoring disturbances from oil & gas production in native prairie environments. Nolan grew up in the Special Areas and moved back to the area following post secondary education in Environmental Sciences. He continues to be part of a family livestock business that ranches on a mixture of tame pastures and native rangeland.

Brian Peers — Treasurer. Brian Peers works for the M.D. of Taber in his role as the Director of Municipal Lands and Leases where he manages the municipalities' owned inventory of lands, primarily native prairie. Brian received his Bachelor of Science from the University of Montana in Wildlife Biology.

Ian Dyson — Board Member. Ian has been affiliated with the PCF since its inception in 1989. He retired from Alberta Environment and Parks in July 2017, but is sustaining volunteer work with several partnerships. His interest is in collaborative approaches to achieve desired environmental outcomes. His professional experience deals with integrated resource management, water management and regional sustainable development plans in Alberta and he has helped build and sustain multi-stakeholder partnerships dealing with approaches to address environmental cumulative effects such as water quality in the Oldman River Basin, transboundary collaboration to sustain ecological health in the Rocky Mountains, and the conservation of prairie and parkland biodiversity.

Brandy Downey — Board Member. Brandy is the Senior Species At Risk Biologist in Lethbridge for Alberta Environment and Parks, Fish and Wildlife Management. Brandy has been a member of the MULTISAR team since 2003 and currently assists AEP and the PCF in managing the program, which works collaboratively with several NGO's, government agencies, and individuals to conserve species at risk in the Grassland Natural Region of Alberta. Unrelated to her work roles, Brandy enjoys hiking and exploring the outdoors with her family.

Christyann Olson — Board Member. Christyann is the Executive Director for the Alberta Wilderness Association and is passionate about our society's responsibility to ensure the health and legacy of wilderness for generations to come. She takes every possible opportunity to enjoy Alberta's wilderness and share her enthusiasm with others. Although her roots are in the Crowsnest Pass, Christyann has lived in and explored much of Alberta including many of its wild places by foot, canoe, and occasionally by horse.

Chelsea Kraus — Board Member. Chelsea was raised on a mixed irrigation family farm near Taber, Alberta where she spent her formative years. When her family moved to farm in Saskatchewan, she attended the University of Saskatchewan and obtained her BSA in 2011. She is now working as an environmental scientist for Trace Associates Inc. in Lethbridge where her work primarily consists of reclaiming disturbances from oil & gas production across Alberta.

Tracy Kupchenko — Board Member. Tracy Kupchenko has spent the last 17 years working out of Medicine Hat, doing range management/land use/prairie conservation in one form or another. In her non-working time, she likes to do cattle work with her horses and volunteer at excellent functions such as the Youth Range Days and Range Stewardship courses. Tracy has been a PCF member for over 10 years, serving on various committees including Education, numerous PCECSC organizing committees and is happy to be currently working alongside fantastic members of the PCF Board.

Neal Wilson — Board Member. Neal Wilson grew up in southern Saskatchewan and attended the U of S receiving his degree in Agriculture in 1995. He worked for various ranches in Southern Saskatchewan and Manitoba. He then worked for the Prairie Conservation Action Plan, Saskatchewan Wetland Conservation Corporation and The Nature Conservancy of Canada working with landowners to develop grazing plans with the strategy of helping them conserve their native prairie. He has managed with Antelope Creek Ranch with his wife Shannon for the past 14 years.

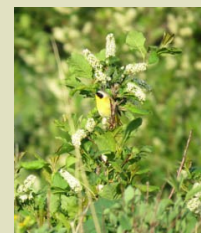
Jeff Forsyth — Board Member. Alberta Conservation Association.

Norine Ambrose — Board Member. Cows and Fish.

Monique Wilkinson — Board Member. AltaLink Management Ltd.

Robert Oakley — Board Member. Alberta Environment and Parks, Public Lands.

Terra Simieritsch — Board Member. Alberta NAWMP Partnership



Recognition of PCF Supporters

Funding and support is critical for on the ground action towards prairie and parkland conservation, as well for maintaining the capacity of the PCF coordinators. Funding is also used for printing, meeting venues and meals, transportation and other operational expenses. We would like to thank our funding partners of 2018-2019 for their commitment to prairie and parkland conservation as without them, we wouldn't be the society we are today.

Alberta Environment and Parks (grants for PCF and MULTISAR)
Parks Canada—Waterton Lakes National Park
The Nature Conservancy of Canada
Buggy Creek Coop

And a special thanks to individuals that make donations to the PCF out of their own pockets:
Cheryl Bradley
Janna Casson
Linda Cerney

We would also like to thank:

Members who incur expenses, without reimbursement, while attending PCF meetings.

Those individuals who made themselves available to serve as tour guides on PCF field trips and those that gave presentations to PCF members at meetings.

Chairpersons of PCF committees who provide valued leadership and committee members who assume a heavier workload to fulfill action recommendations contained in the PCAP.

Members that volunteer at PCF casinos.

We will inevitably have failed to identify the generous contributions of some individuals and organizations in this section. We apologize for any oversight on our part.



PCF Coordinators

Katheryn Taylor — Coordinator. Katheryn obtained her MSc in biology from the University of Lethbridge in 2003 and has worked on many wildlife and vegetation research projects on the prairies, including work such as 'the effects of cattle grazing on riparian birds' and 'the effects of river damming on riparian birds and vegetation'. She also did some work with the Cows and Fish Program, conducting riparian inventories across Alberta. She has done some teaching and private consulting in the form of environmental impact assessments. She is currently one of the coordinators for the MULTISAR program. Katheryn has been with the PCF since 2007.

Sasha Harriott — Coordinator/Finance. Sasha started out her career in the environmental field as a forest fire fighter. From there she joined the Cows and Fish Program and traveled across Alberta conducting riparian inventories, engaging landowners and promoting healthy riparian areas. She worked with AMEC Earth and Environmental as a Safety and Logistics Coordinator and is currently the Secretariat for the Crown Managers Partnership. She is the mother of 4 children and enjoys living in the beautiful Crowsnest Pass. Sasha has been working with the PCF since 2008.

PCF Member Organizations

Government (municipal, provincial, federal)

Alberta Agriculture and Forestry
Alberta Energy Regulators
Alberta Environment and Parks
Canadian Forces Base, Suffield (Department of National Defence)
Canadian Wildlife Service, Environment Canada
City of Lethbridge, Helen Schuler Nature Centre
Historic Resources Management Branch, ACT
Municipal District of Taber
Special Areas Board
Waterton Lakes National Park (Parks Canada)



Non-Government Organizations/Companies

AECOM Canada Ltd.	LandWise Inc.
AJM Environmental Inc.	Lethbridge Naturalists Society
Alberta Biodiversity Monitoring Institute	Milk River Watershed Council
Alberta Conservation Association	Millenium Land Ltd.
Action for Agriculture	Miistakis Institute
Agility Program, University of Lethbridge	Nature Alberta
Alberta Native Plant Council	Nature Conservancy of Canada
Alberta Wilderness Association	Oldman Watershed Council
AltaLink	Operation Grasslands Community, Alberta Fish and Game Association
Amec Foster Wheeler	Pekisko Group
Ann and Sandy Cross Conservation Area	Rangeland Conservation Service Ltd.
Antelope Creek Ranch	Red Deer River Watershed Alliance
Battle River Watershed Alliance	Round Rock Ranching
Boundary Creek Landowners Association	Salmtec
Calgary Zoo	Southern Alberta Land Trust Society
Canadian Parks and Wilderness Society (Calgary/Banff Chapter)	Special Areas Advisory Council
Cows and Fish — Alberta Riparian Habitat Management Society	Sweetgrass Bison
Decisive Edge	TERA Environmental Consultants, a CH2M Hill Company
Ducks Unlimited Canada	Trace Associates Inc.
Eastern Irrigation District	University of Calgary
Environmental Strategies Inc.	University of Lethbridge
Foothills Restoration Forum	Vermilion River Watershed Alliance
Glenbow Ranch Park Foundation	Waterton Biosphere Reserve Association
Alberta Grazing Leaseholders Association	Western Stockgrowers Association



Alberta Prairie Conservation Forum

www.albertapcf.org