

Natural Regions/Subregions
Draft 2004 - Version2

Boreal Forest Natural Region

- Central Mixedwood
- Dry Mixedwood
- Northern Mixedwood
- Sub-Arctic
- Peace-Athabasca Delta
- Lower Boreal Highlands
- Upper Boreal Highlands
- Athabasca Plain

Rocky Mountain Natural Region

- Alpine
- Sub-Alpine
- Montane

Foothills Natural Region

- Upper Foothills
- Lower Foothills

Canadian Shield Natural Region

- Kanan Uplands

Parkland Natural Region

- Foothills Parkland
- Peace River Parkland
- Central Parkland

Grassland Natural Region

- Dry Mixedgrass
- Foothills Fescue
- Northern Fescue
- Mixedgrass

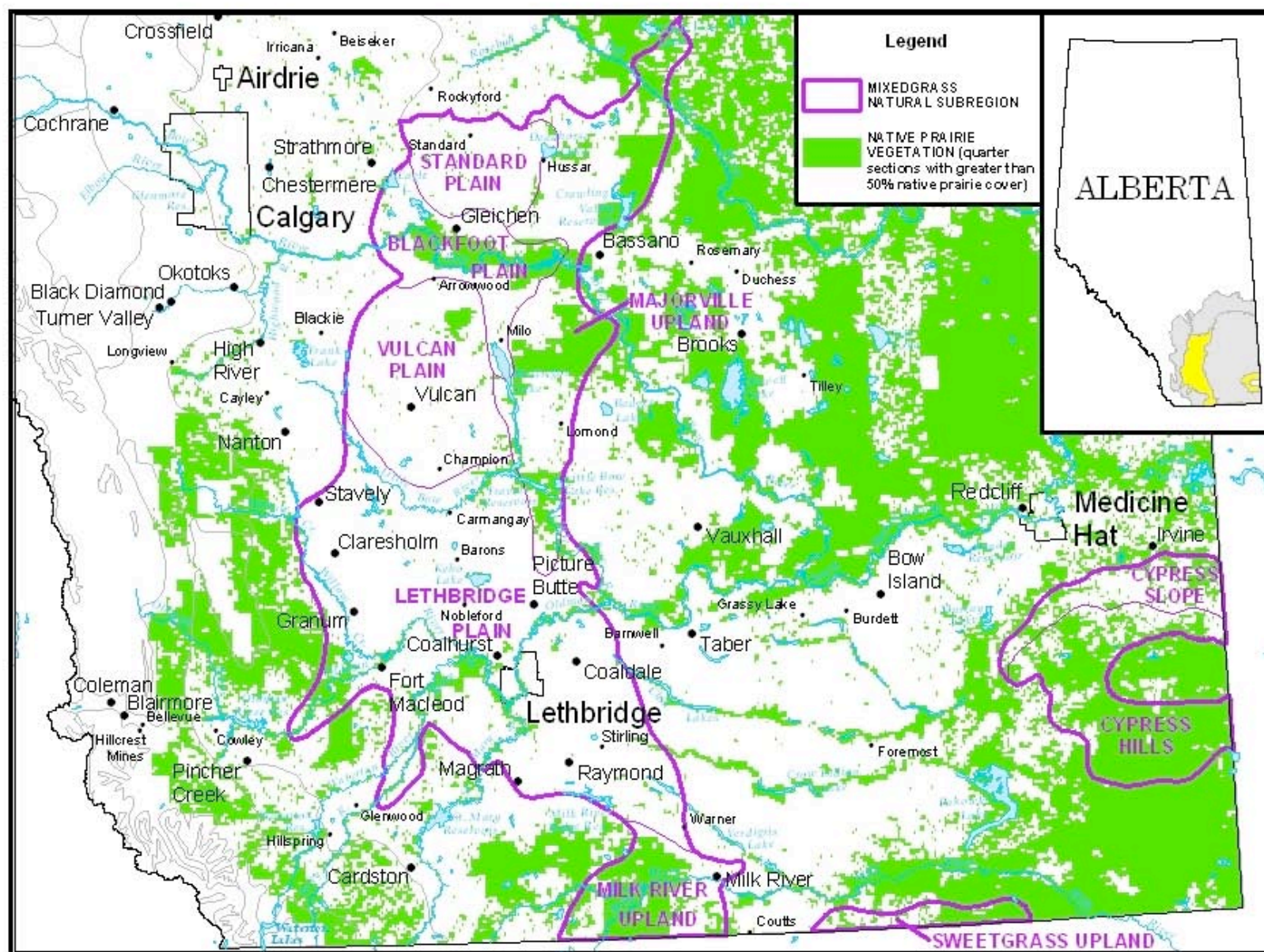
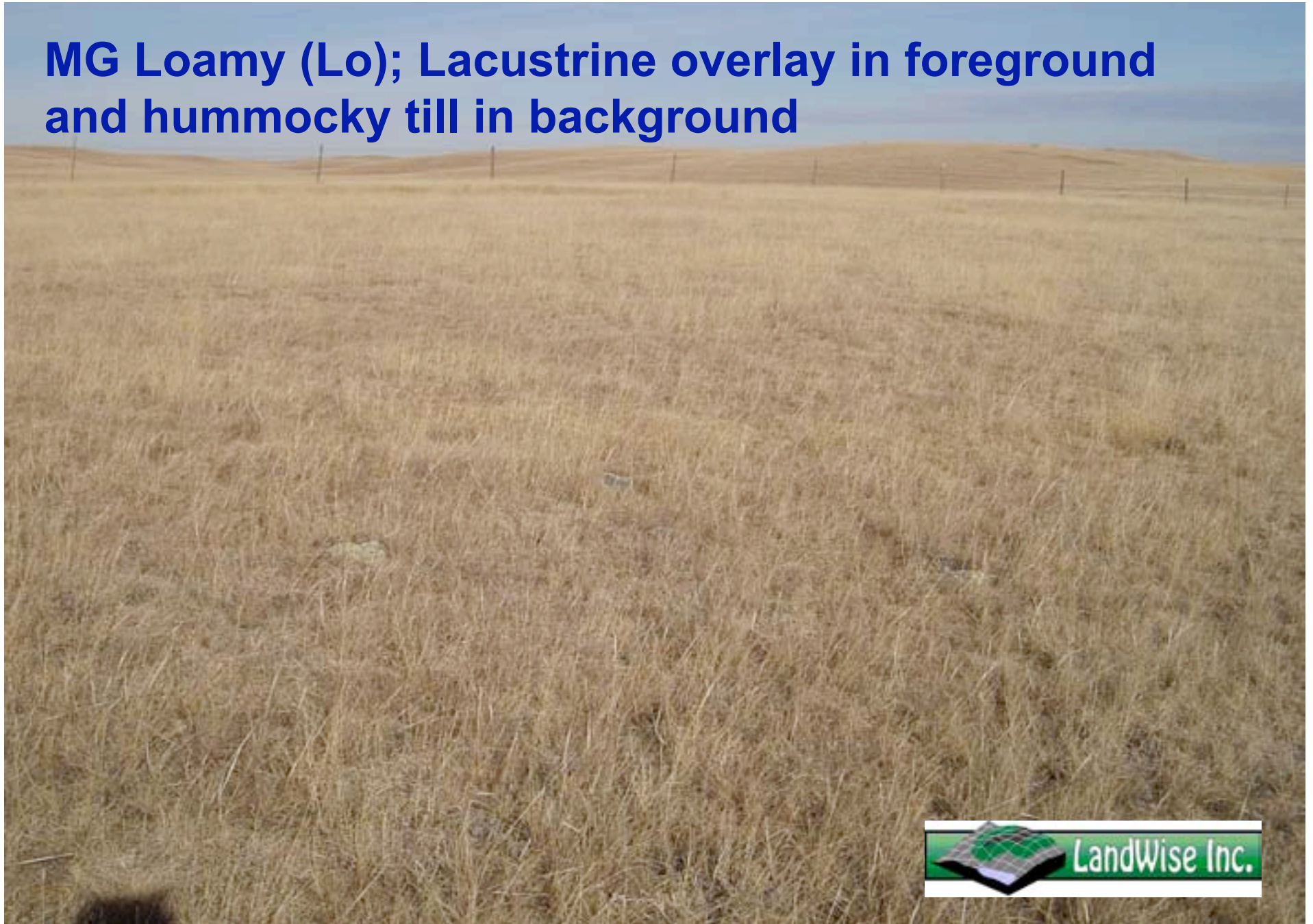


Figure 2: Ecodistricts in the Mixedgrass Natural Subregion

**MG Loamy (Lo); Lacustrine overlay in foreground
and hummocky till in background**



MG Sundial Butte; Loamy with significant Limy crests



MG Sundial area; hummocks are Loamy (Lo) with Limy (Li) crests and swales are loamy with minor Lentic Temporary (LenT).



Thin Breaks (TB), Limy (Li) and Badlands (BdL)



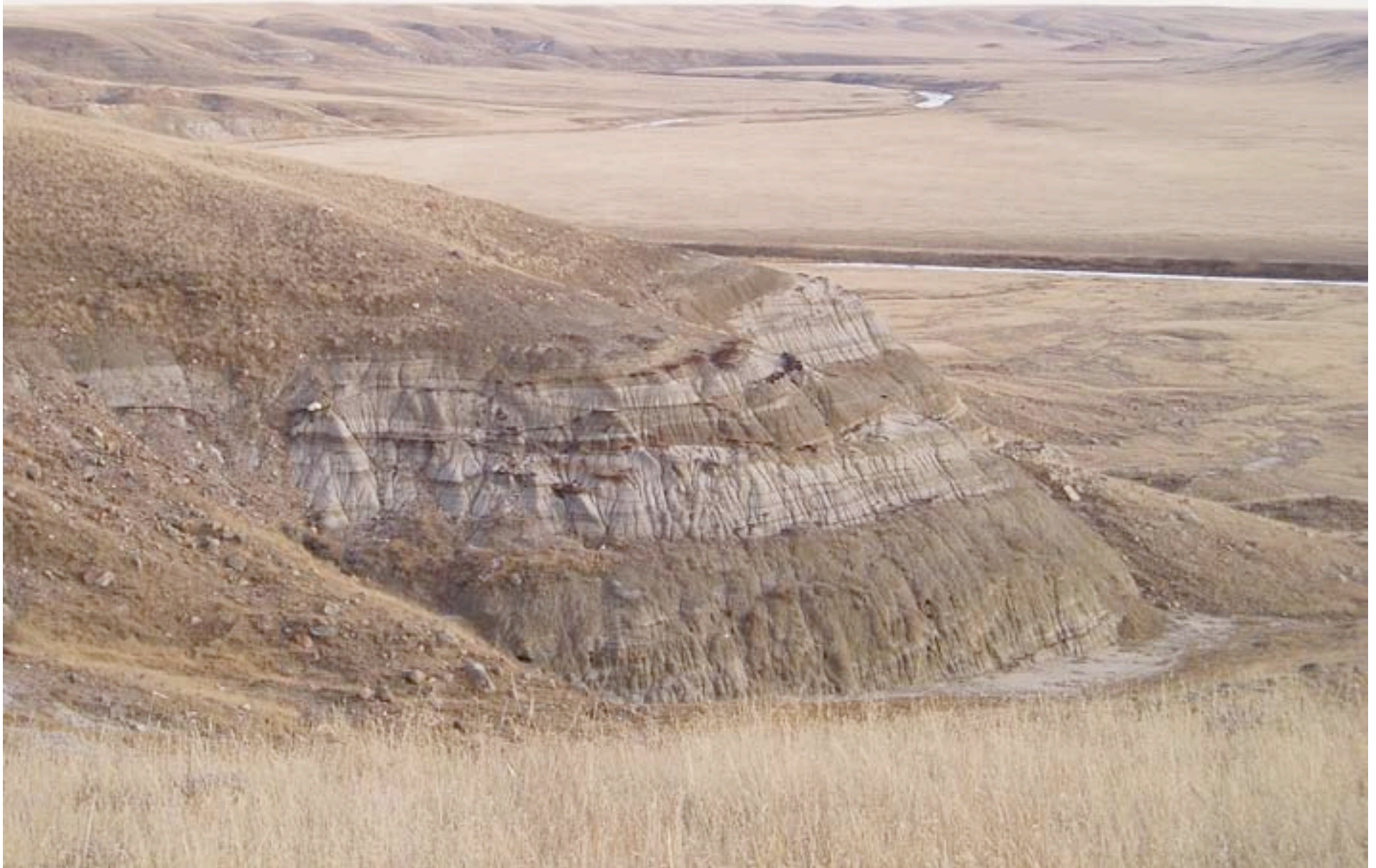
Little Bow valley slumps; Thin Breaks (TB)



Overflow, Thin Breaks and Limy in Little Bow



MG Badlands (BdL); glacially contorted bedrock



**MG Badlands (BdL),
Thin Breaks (TB) and
Overflow (Ov)**



MG Badlands (BdL) North of Gleichen



MG Thin Breaks (TB) and Badlands at Belly River



Badlands (BdL), Thin Breaks (TB), and Overflow (Ov)



MG Overflow and Thin Breaks adjacent to Badlands at Gleichen



MG Blowouts (BIO) and Thin Breaks (TB) at Keho Lake



Scattered Blowouts in Clayey Landscape NW of Standard



MG Co-dominant Blowouts, Overflow and Clayey NW of Standard



MG Limy (Li) slopes and Overflow (Ov) apron



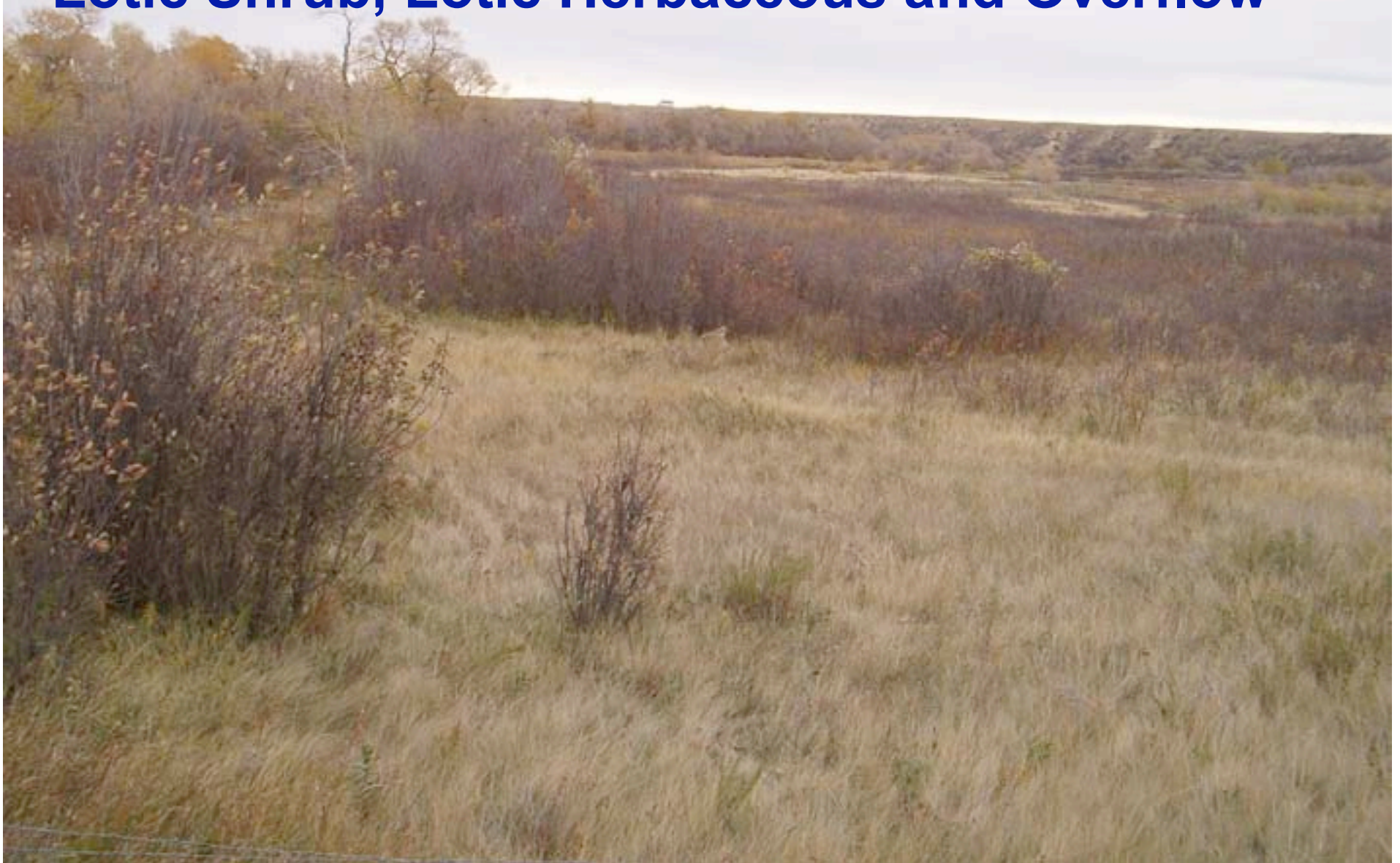
Overflow fans in the Little Bow Valley



Little Bow Lotic Shrub (LtcS) and Overflow (Ov) fans



MG Belly River Valley; mix of Lotic Deciduous, Lotic Shrub, Lotic Herbaceous and Overflow



MG Lotic Shrub with willows, pincherry and silverberry



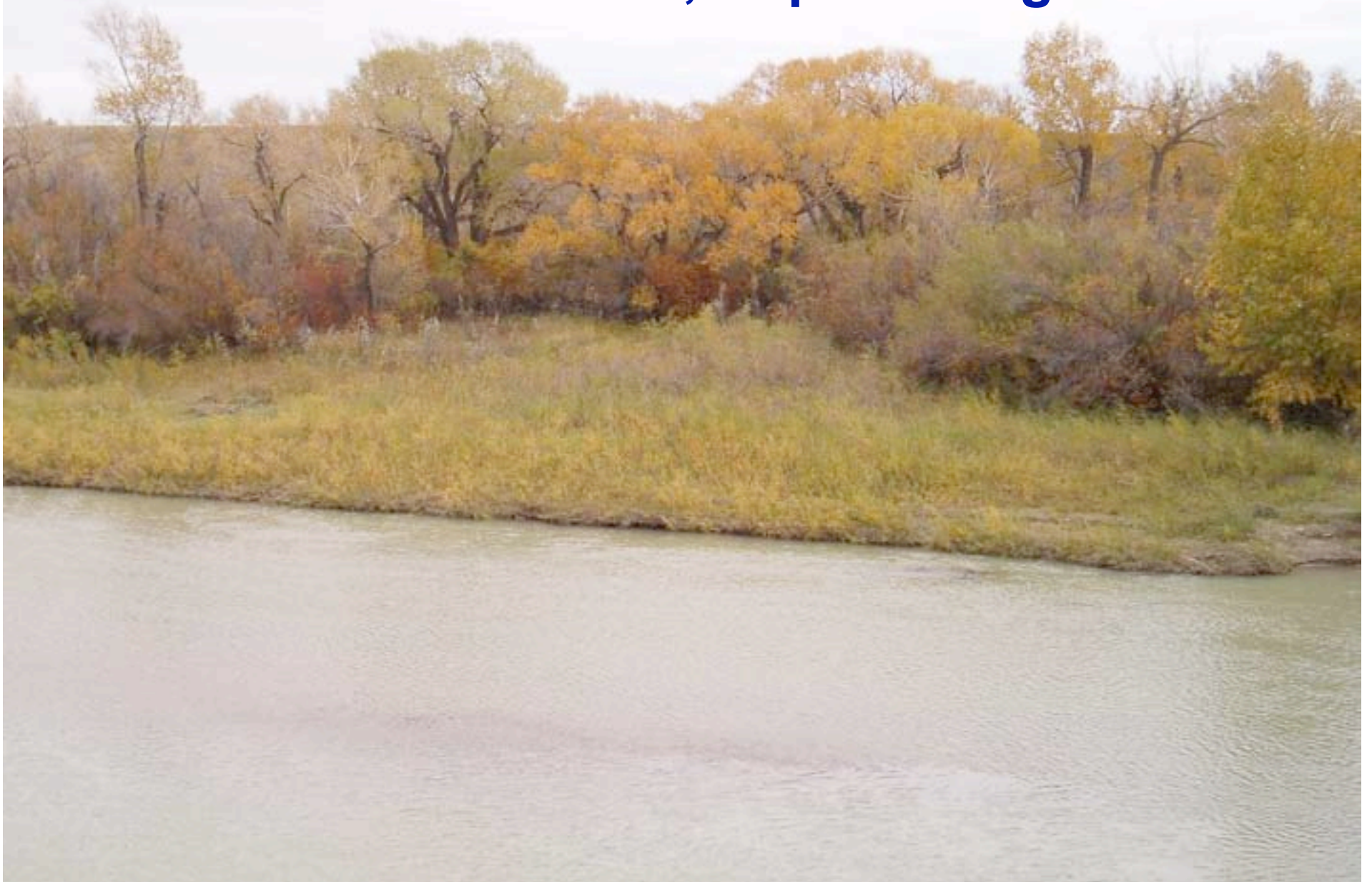
MG Belly River Lotic shrub and Deciduous types



MG Lotic Shrub and Lotic Deciduous at Monarch



MG Lotic Deciduous; *Populus angustifolia*



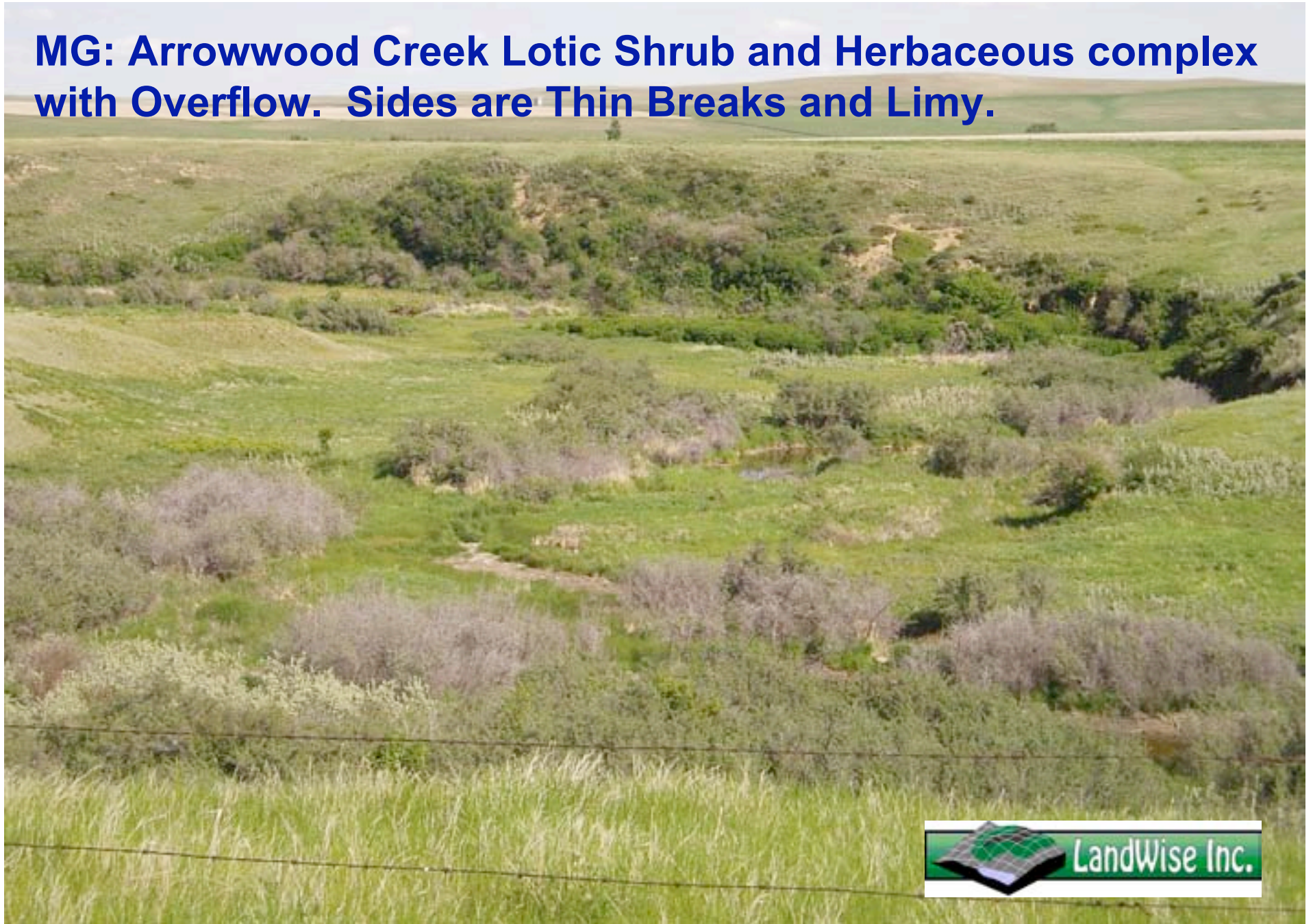
MG: Summerview near Brocket; Lotic Deciduous, Lotic Shrub, and Islands in the Oldman River



Bow River Valley Lotic Site Types (Background) Near Gleichen



MG: Arrowwood Creek Lotic Shrub and Herbaceous complex with Overflow. Sides are Thin Breaks and Limy.



**MG: Lotic Shrub Near Wisdom, South of Medicine Hat
Uplands are Loamy with Significant Limy**



Lotic Shrub (LtcS), Overflow (Ov) & Loamy (Lo) NW of Gleichen



MG: Siksika Lotic Shrub (Ltc S)



**MG: Milk River Valley; Lotic Shrub, Lotic Herbaceous
and Overflow Near the Town of Milk River**



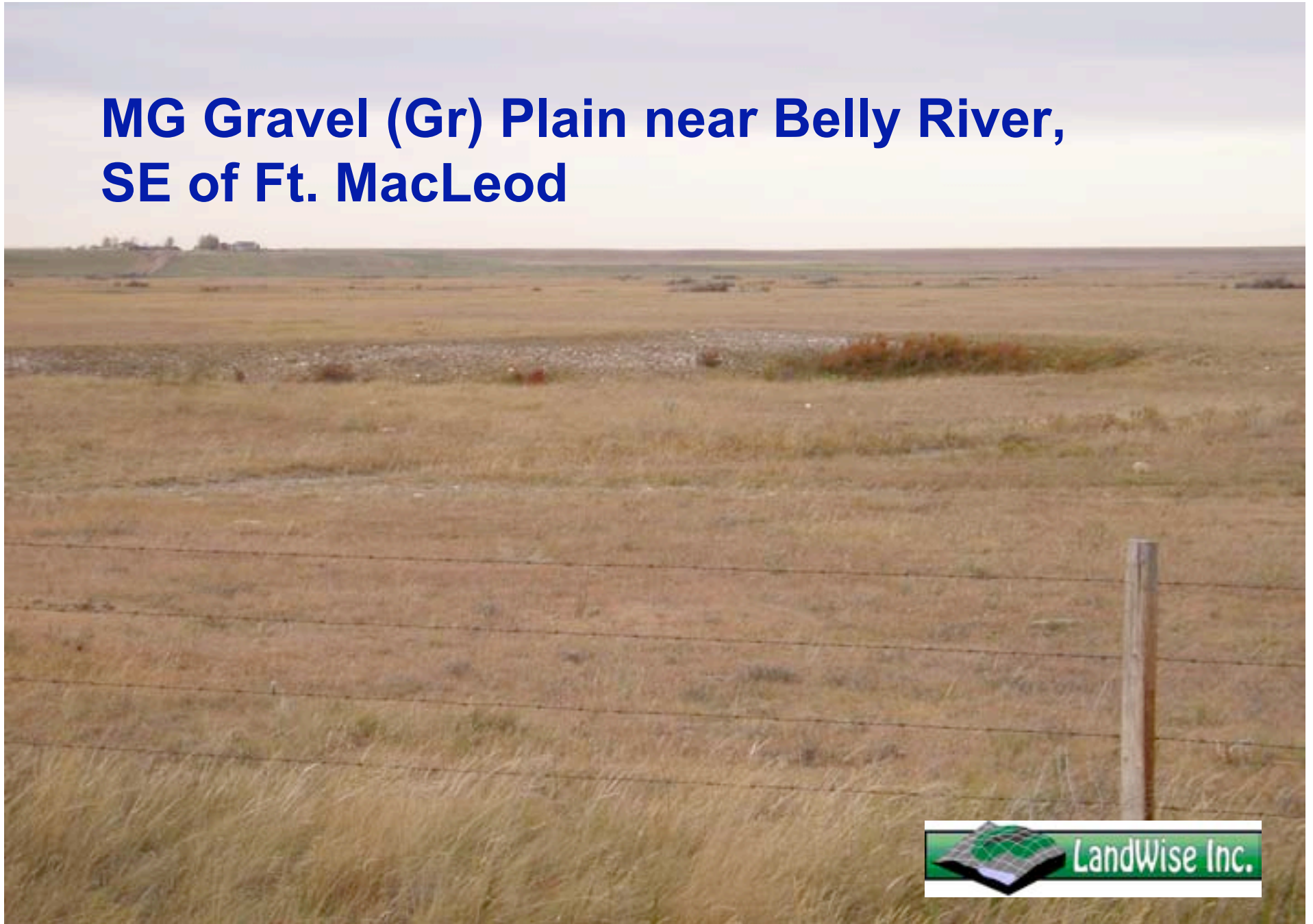
MG Lotic Herbaceous (LtchH) and Blowouts (BIO) NW of Standard



**MG Lotic Herbaceous with Sandy and Loamy
edges SE of Ft. MacLeod**



MG Gravel (Gr) Plain near Belly River, SE of Ft. MacLeod





MG Gravel (Gr) overlying Shales in Belly valley

Shallow to Gravel (SwG) and Gravel (Gr) over Lacustrine and Shale



MG Shallow to Gravel (SwG) over Lacustrine over Shale



MG Pit (G); Gravel Pit



MG Gravel (Gr) in hummocks near Sundial Butte



MG Gravel (Gr) in hummocky landscape



MG: Groundwater Influence West of Ft. MacLeod. Classic model for the Subirrigated Site Type.



Subirrigated (Sb) from fence to centre right and Gravels (Gr) at Iron Springs



MG Little Bow Valley Subirrigated (Sb) + Overflow (Ov) fans



**MG Sands (Sa) with 5-10% Coarse Fragments;
Any % less than 20 is not Gr or SwG.**



MG Sands (Sa)



MG Sandy (Sy); slight deflation hollows + Roses



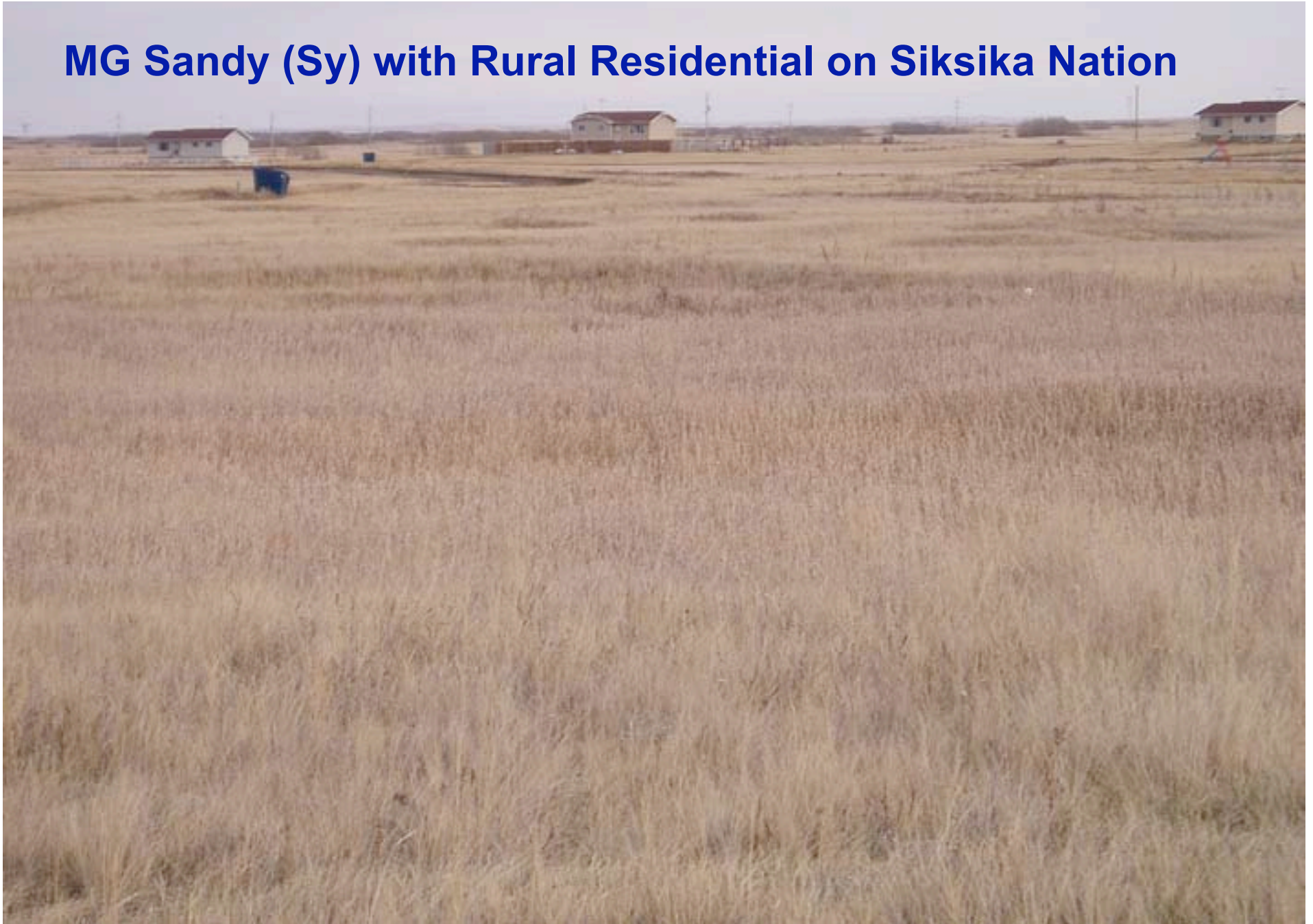
MG: Siksika Sandy (Sy) Plain with Sporadic Shrubs





MG Sandy (Sy) or Sands (Sa); Use Soil Survey Information for Site Type calls based on Texture

MG Sandy (Sy) with Rural Residential on Siksika Nation



Saline Lowland (SL) and Lentic Open Water (LenW) near Nobleford



MG Saline Lowland (SL)



MG Saline Lowland (SL) with cropland in background; North of Nobleford



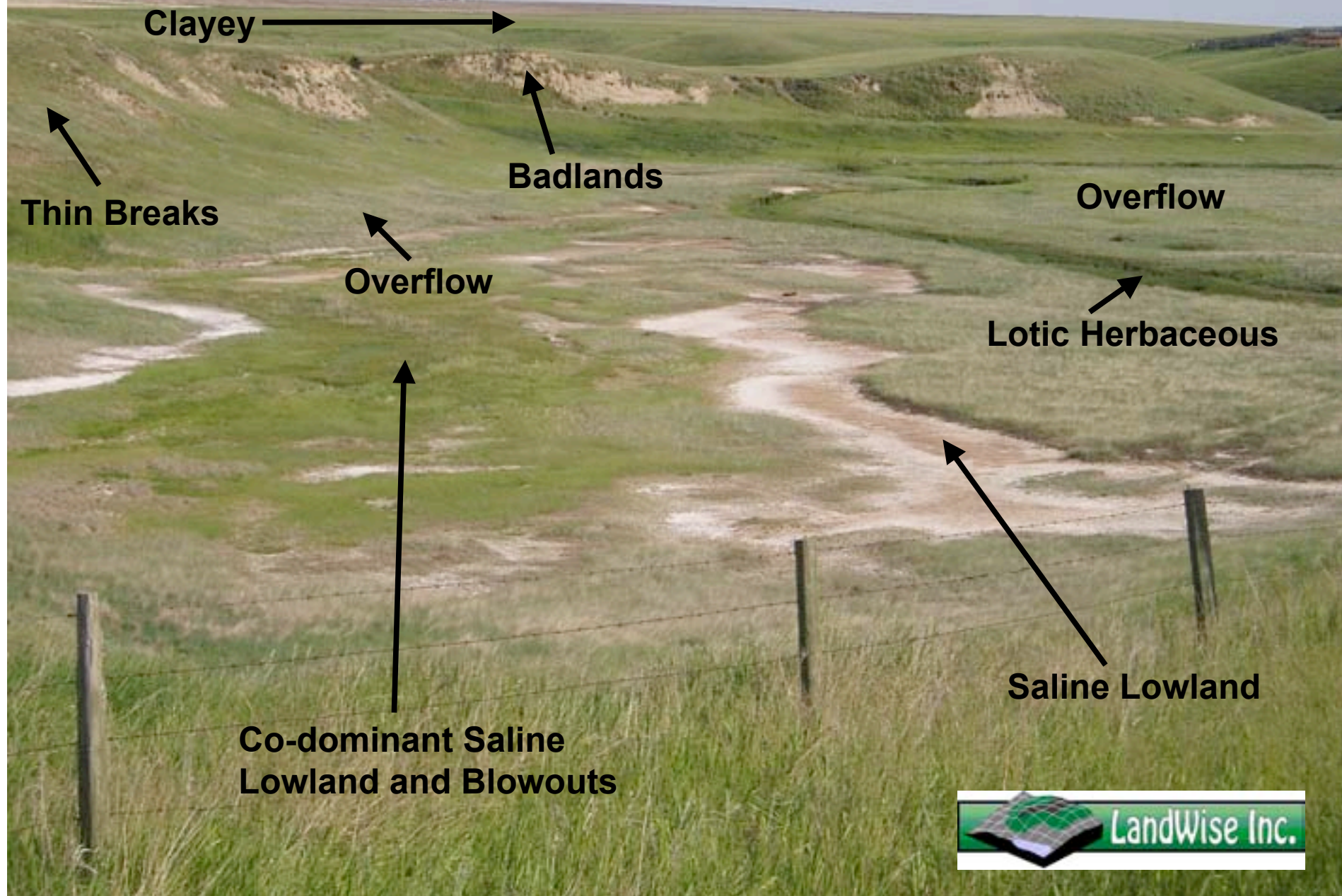
MG Overflow (Ov) and Saline Lowland (SL) south of Keho Lake



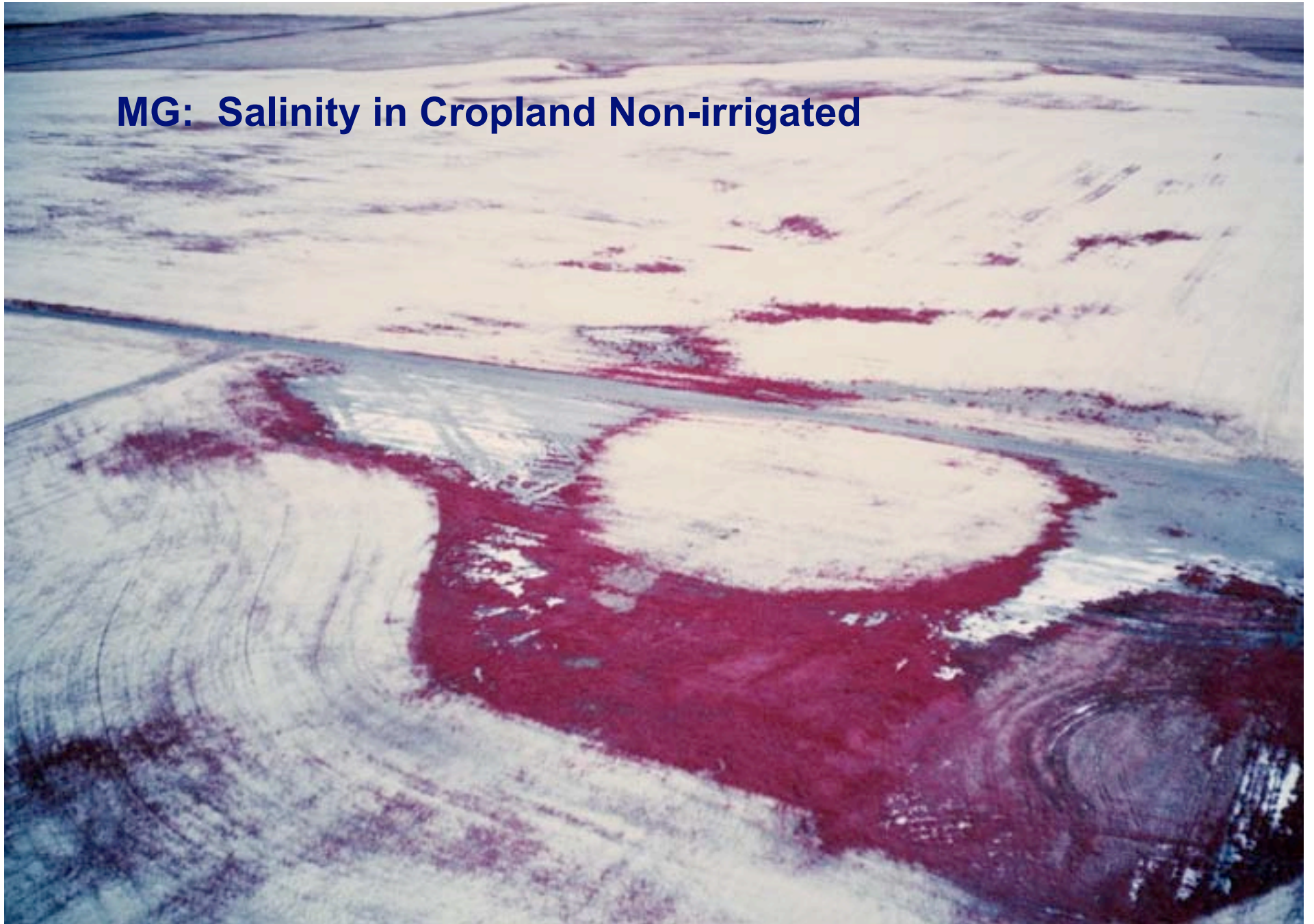
**MG Overflow (Ov) + Saline Lowland (SL);
Thin Breaks (TB) + Badlands (BdL) at middle left.**



Crowfoot Creek Near Standard



MG: Salinity in Cropland Non-irrigated



MG: Salinity in Hayland Non-Irrigated



**MG: South of Raymond. Colour Infrared
Contrast Between Salinity, Lentics and Cropland**



MG Discharge wetland (LenS) in Irrigated Pasture (PI)



MG Contact zones of Wet Meadow and Tall Marsh



**MG: Rush Lake S. Shore About 40 km South of Medicine Hat.
Shorelines indicate different Lentic permanency.**



**MG: Lentic Temporary and Seasonal Wetlands SW of Wrentham;
Only delineate Lentic and Lotic if >1 ha in area.**



MG: Wrentham Lentics; Identify Seasonal vs. Semi to Permanent; A clue: what Lentics are occasionally farmed?



MG: Lodge Creek Bench Lentic Seasonal, with Spike Rush surrounded by Tufted Hair Grass. Dominantly Loamy uplands.



MG: Lentic Fenceline Contrast Near Ft. MacLeod



**Lentic Semi to Permanent (Lentic SP) and Gravels (Gr)
near Gleichen**



**MG Lentic Semi to Permanent (Lentic SP) or Lentic Alkaline Fen
Near Gleichen. If salts are visible, then LenA is most appropriate.**



MG Lentic Open Water (LenW)



MG Lentic open water (LenW)



MG Lentic Open Water (LenW) at Iron Springs



MG Lentic Open Water (LenW) at Keho Lake



MG LenW of Travers Reservoir and Cropland non-irrigated (CN) in middleground



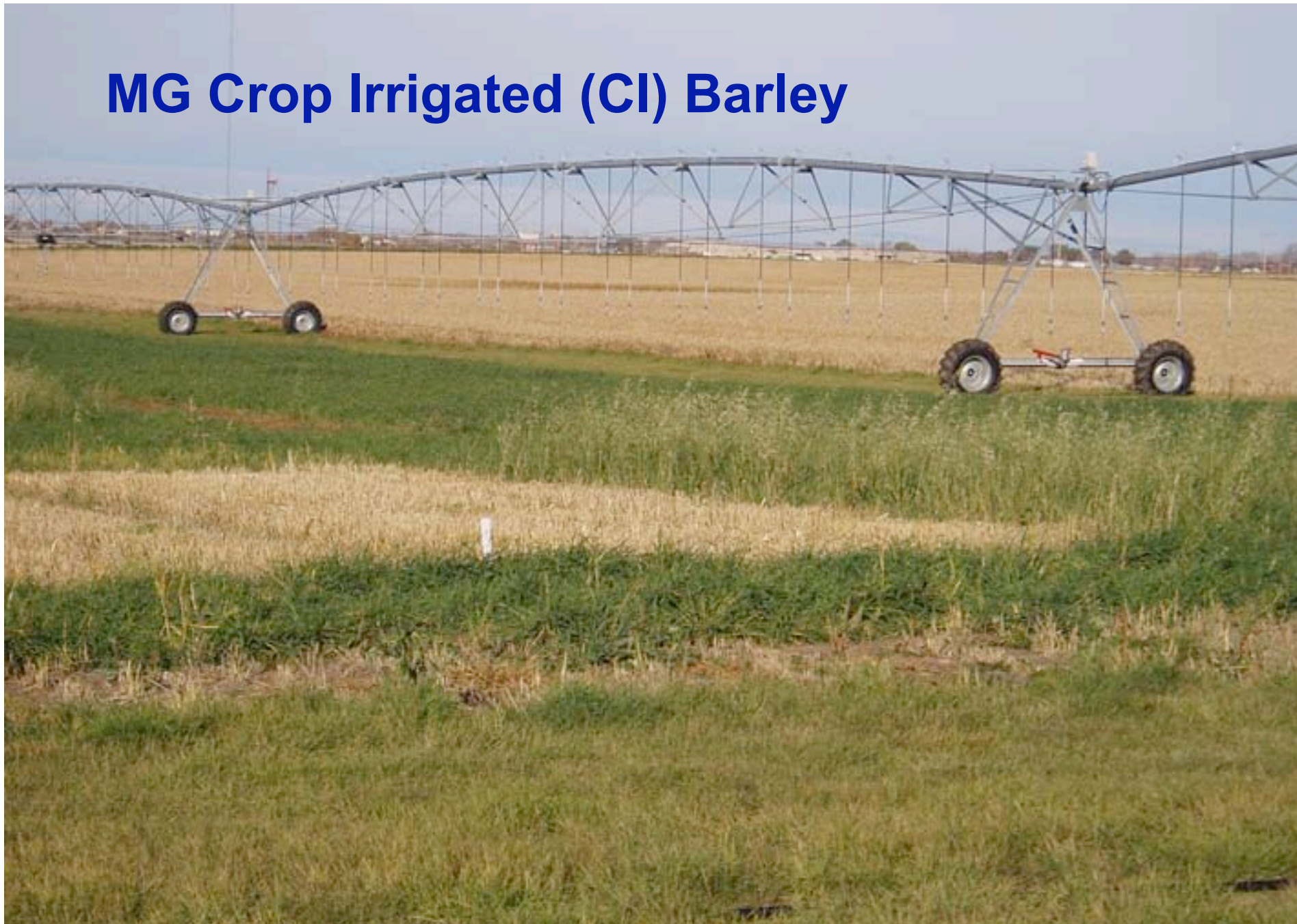
MG Crop Non-Irrigated (CN) of Dryland Canola



MG Wheel-move Irrigation (CI)



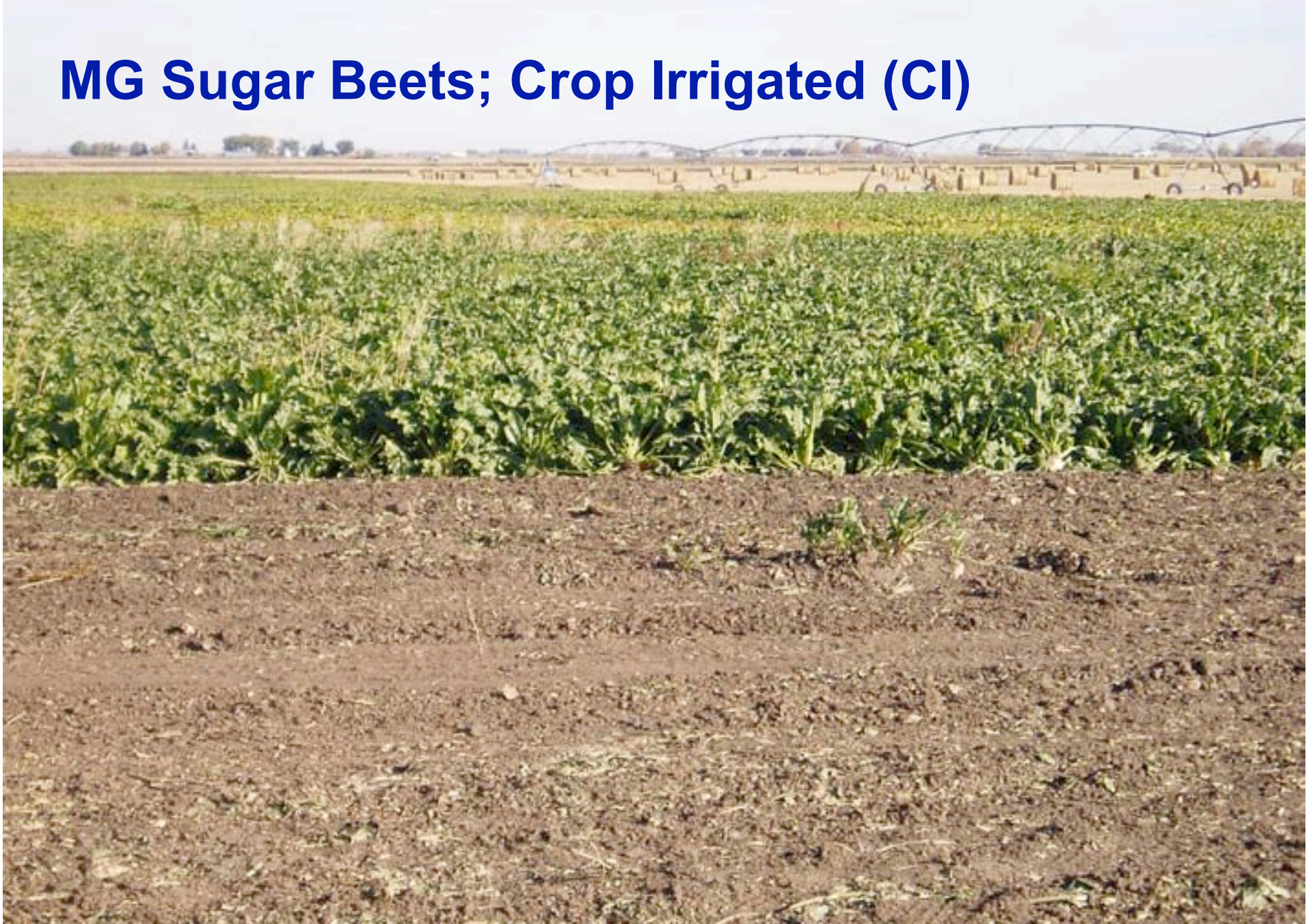
MG Crop Irrigated (CI) Barley



MG Corn Crop Irrigated (CI)



MG Sugar Beets; Crop Irrigated (CI)



MG Trickle Irrigation (CI) – Pumpkins and Berries



MG Pasture Irrigated (PI) near Lethbridge



MG: Gleichen Pasture Irrigated (PI) via Flood System



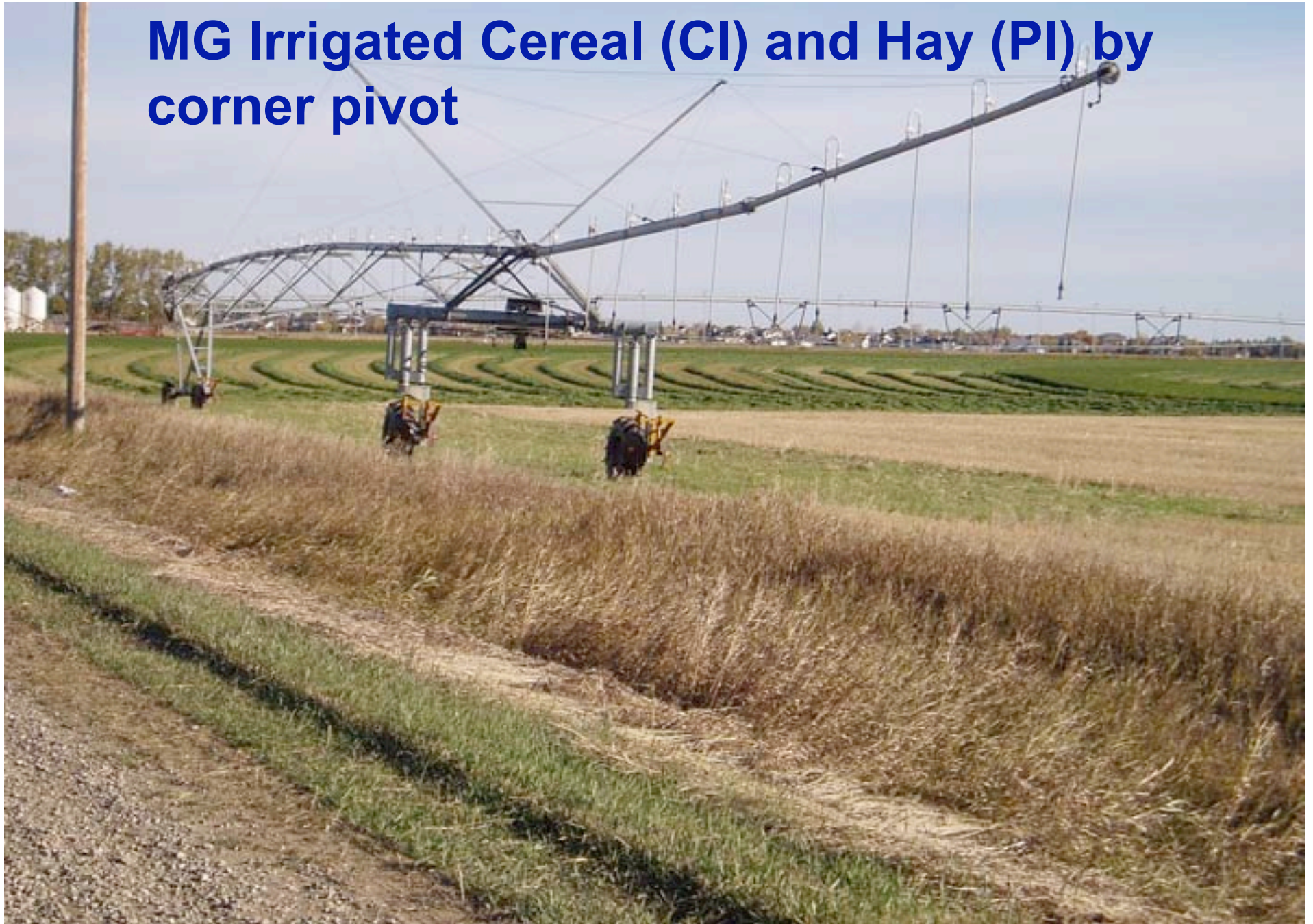
MG Pasture Irrigated (PI); flood irrig. in Little Bow



**MG Pasture with flood irrigation on lower slopes (PI)
and native/natural site types on upper slopes (eg. Sy).**



MG Irrigated Cereal (CI) and Hay (PI) by corner pivot



MG Shelterbelts



MG Shelterbelt; linear feature



MG Travers Reservoir + Rural (Ru) Residential



MG Rural (Ru) Farmstead; if larger than 5 ha, then delineate as a polygon. Cropland Non-Irrigated in foreground.



MG Rural (Ru) Farm



MG Rural (Ru) - Keho campground



**Be cautious when assessing rural permanency;
this is a temporary potato cleaning operation.**



MG Urban (Ur) - Nobleford



MG: Dev – TR. Highway 2-3 Interchange W of Ft. MacLeod



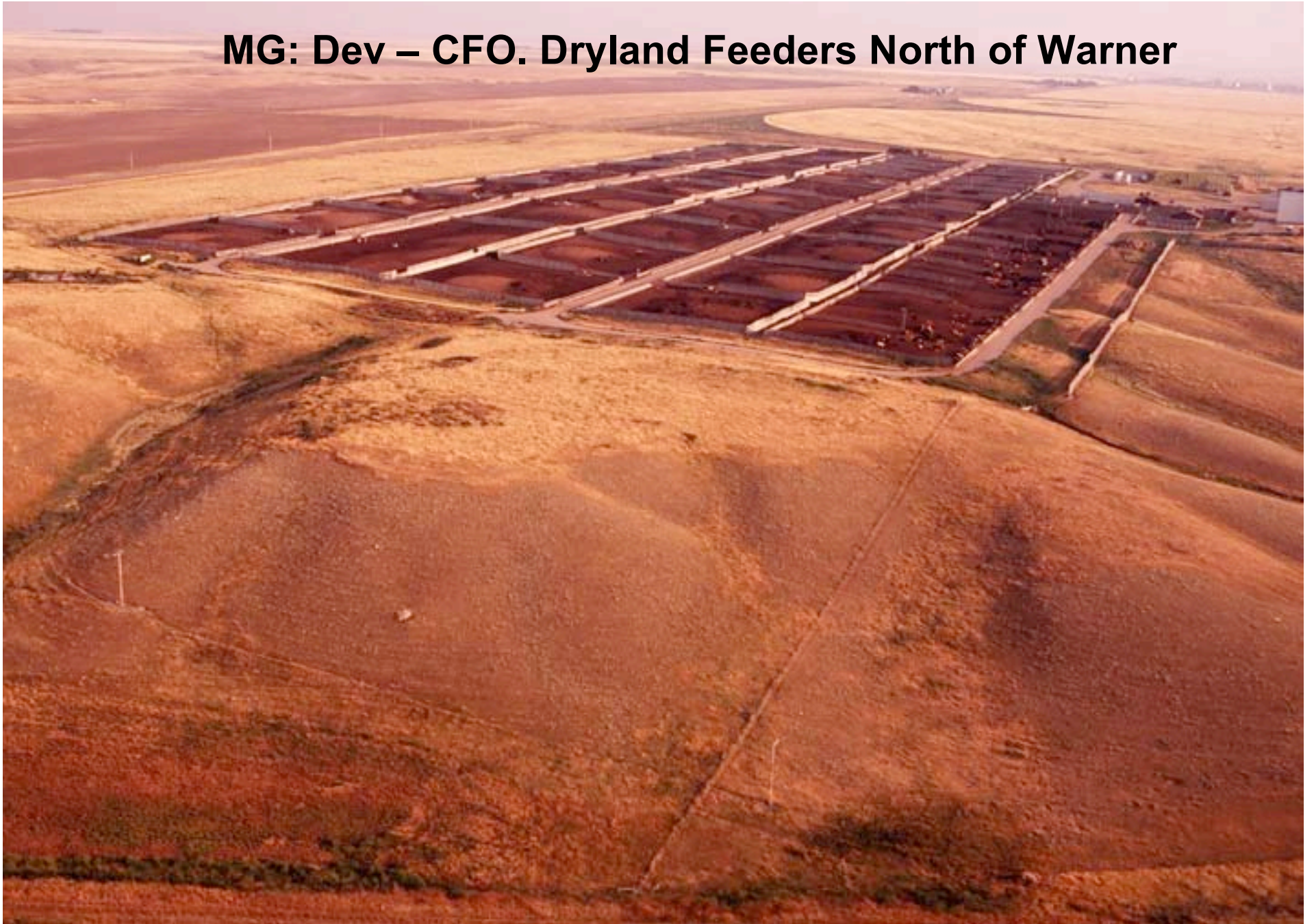
MG (Dev-AG) Lethbridge Agriculture Research Stn.



MG Industrial - Confined Feeding Operation; Dev-CFO



MG: Dev – CFO. Dryland Feeders North of Warner



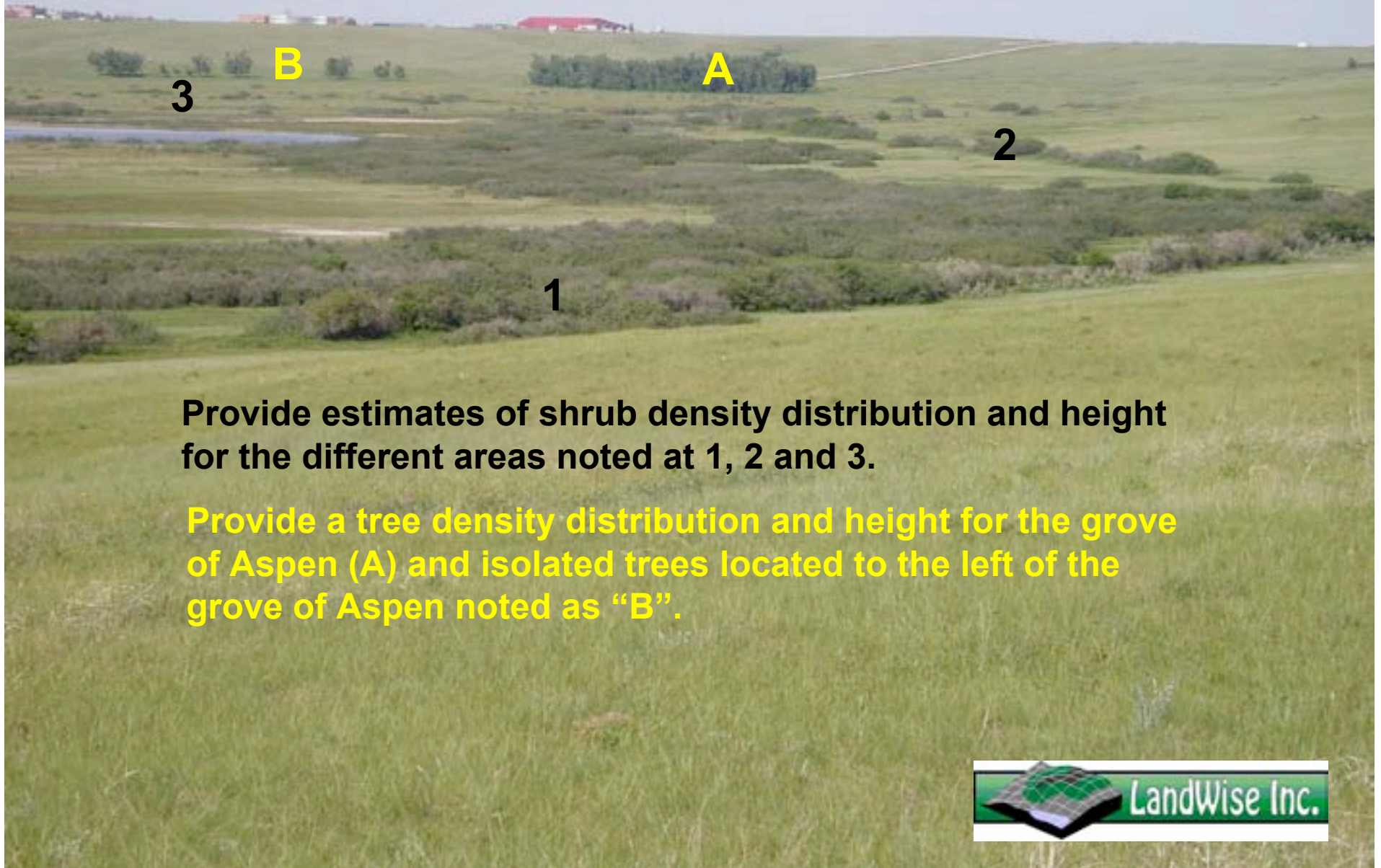
MG Dev CFO – Lethbridge Research Station Farm



**MG Fenced Natural Recovery Wellsite near Turin;
Increased litter produces a different spectral signature than
outside. However, both in and out are the same site type!**



SW of Gleichen; Examples of Different GVI Polygons



MG: Colour Infrared; Shrub patterns on N. edge of Milk R. Ridge

